



THE FINEST NAME IN TENNIS NOW BRINGS YOU PADEL





En-tout-cas

THE FINEST NAME IN TENNIS NOW BRINGS YOU PADEL

Established in 1909, En Tout Cas Tennis Courts Ltd have over 100 years of experience in sports surfaces. An En Tout Cas court is an investment in the quality of the materials we use and the skills and experience that we have developed over decades as court builders. The Shepherd family has been involved in the business of building courts for En Tout Cas since 1946.

As a family run company, we pride ourselves on our service. All our work is carried out in-house. That means that we only use our own plant and equipment, operated by our highly skilled and qualified staff.

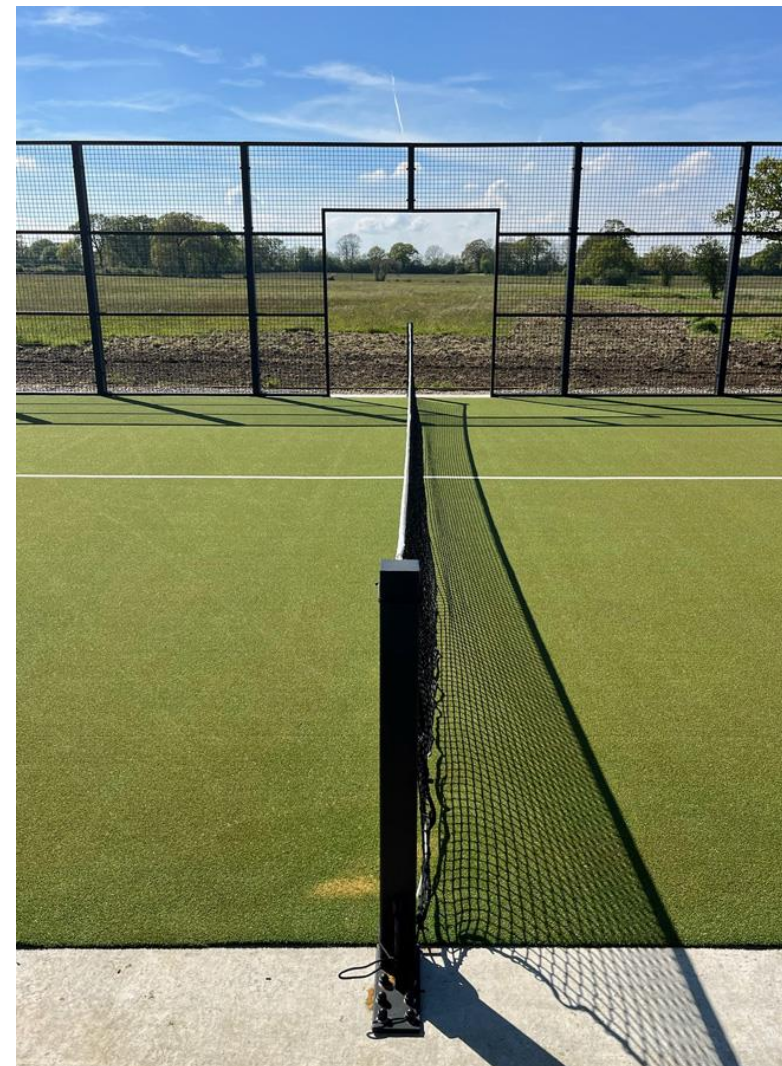
The result is a best-value, high-quality court that looks great, plays well and blends harmoniously into its natural surroundings.

We are specialists in Tennis court and MUGA construction, resurfacing and maintenance and now bring our experience and attention to detail to Padel Courts.

You will find our tennis courts, sports surfaces and multi-use games areas in use all over the UK . We combine a proud heritage with an unashamedly old-fashioned pride in our workmanship and a commitment to innovation and modern technologies.



Tony Shepherd
Director, En Tout Cas
sales@etccourts.com





With an impressive track record and a passion for delivering exceptional quality, PadelCreations specialize in designing and constructing state-of-the-art Padel Courts that enhance the sporting experience for enthusiasts of all levels.

With almost **500** Padel Courts under our belt, our comprehensive understanding of Padel Court construction, coupled with our commitment to customer satisfaction, enables us to deliver tailor-made solutions that meet the unique needs of our clients supporting our core values regarding safety.

Our Padel Courts are made with high-quality materials and are built to last, ensuring that players can enjoy the game for years to come.

We have designed our courts to be environmentally friendly, using energy-efficient lighting and materials wherever possible. .

PadelCreations hold the right to amend quotations based on changing factors, site surveys, material costs, FX etc.



Juan A. Cánovas
CEO – PadelCreations



Ed Ratcliff
UK Representative



CDM Partner

The aforementioned tasks will be provided by an RICS accredited Building Surveyor with over 25 years of experience working throughout the United Kingdom. He will provide building consultancy / CDM / project management and contract administration services.

CRD Building Consultancy has £1m of professional indemnity insurance and £2m of public liability insurance and specialises in project management, contract administration, architectural design, production of drawings and residential & commercial building surveys.

The excavating and enabling works will fall under the terms of the CDM Regulations 2015 and our partner will perform the role of the Principal Designer for the projects.

The Construction (Design and Management) Regulations 2015 (CDM 2015) aim to ensure the health, safety, and welfare of those involved in construction projects.

These are the main set of regulations for managing the health, safety and welfare of construction projects. The CDM regulations apply to all building and construction work and includes new build, demolition, refurbishment, extensions, conversions, repair and maintenance.

The regulations introduce key duty holders—Principal Designer and Principal Contractor—who will play vital roles in planning and managing safety throughout the project.

Prior to the excavations and groundworks commencing our partner will obtain Building Regulations Approval for the projects.

Our partner will project manage the groundworks and act as the point of contact for the groundworks contractor and liaise with the canopy and padel court suppliers and their contractors and will visit the sites to monitor the progress and quality of the works being undertaken and ensure the projects are completed in a timely manner.

To ensure that the groundworks are completed and have an agreed completion date, the groundworks contractor will be employed under a JCT Building Contract which will be administered by our Building Consultancy partner.



Chris Day

Chartered Surveyor at
CRD Building Consultancy
chris.day@crdbc.co.uk



The Trade Association for UK Sports and Play Construction

The Sports and Play Construction Association (SAPCA) is the UK's trade association for the sports and play construction industry.

The association's 240+ members are carefully vetted for excellence and are committed to SAPCA's Codes of Practice and guidelines – ensuring they work to the highest standards.

SAPCA and its members set the standards for excellence in the design, construction and maintenance of sports and play facilities across the UK.

The SAPCA badge is a trusted quality mark.

En Tout Cas Tennis Courts Ltd are proud and respected members of SAPCA.



Clients and Partners



Groundworks



En Tout Cas Padel Courts delivered in house start to finish



En Tout Cas Padel Courts delivered in house start to finish



Ringbeam on Existing Court



- Cheaper installation
- Utilise the existing drainage
- Reduces groundworks timelines

Turf Specifications

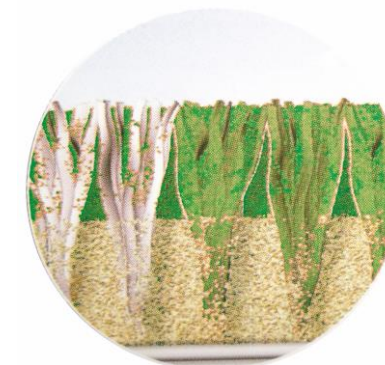
Padel Savanna® - Our Recommendation



DATA SHEET

SAVANNA FOR PADEL COURTS

Unlike most modern padel surfaces, Savanna is a half-filled surface, leaving enough exposed fibre so that users can appreciate its aesthetics. It also offers the benefit of keeping the sand away from the surface of the court. As a result, players stay isolated from the sand and the court plays at a consistent pace whether it is wet or dry. The surface dries very quickly after rain in comparison with the sand filled or sand dressed surfaces. Savanna is stitched much closer than other surfaces and uses polyethylene rather than polypropylene. It therefore allows the fibres to stand up with much less sand infilling and allows a degree of slide.



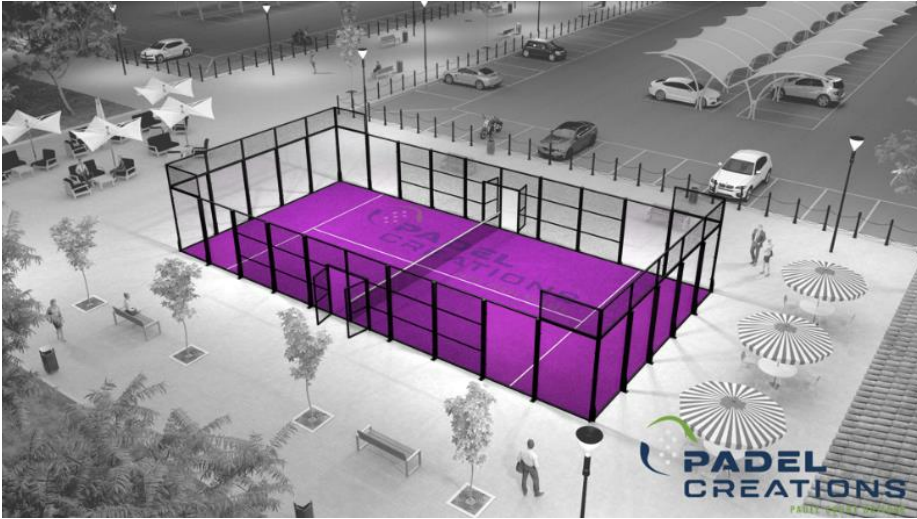
www.entoutcaspadel.co.uk



sales@etccourts.com

Colour options – Surface and Steel



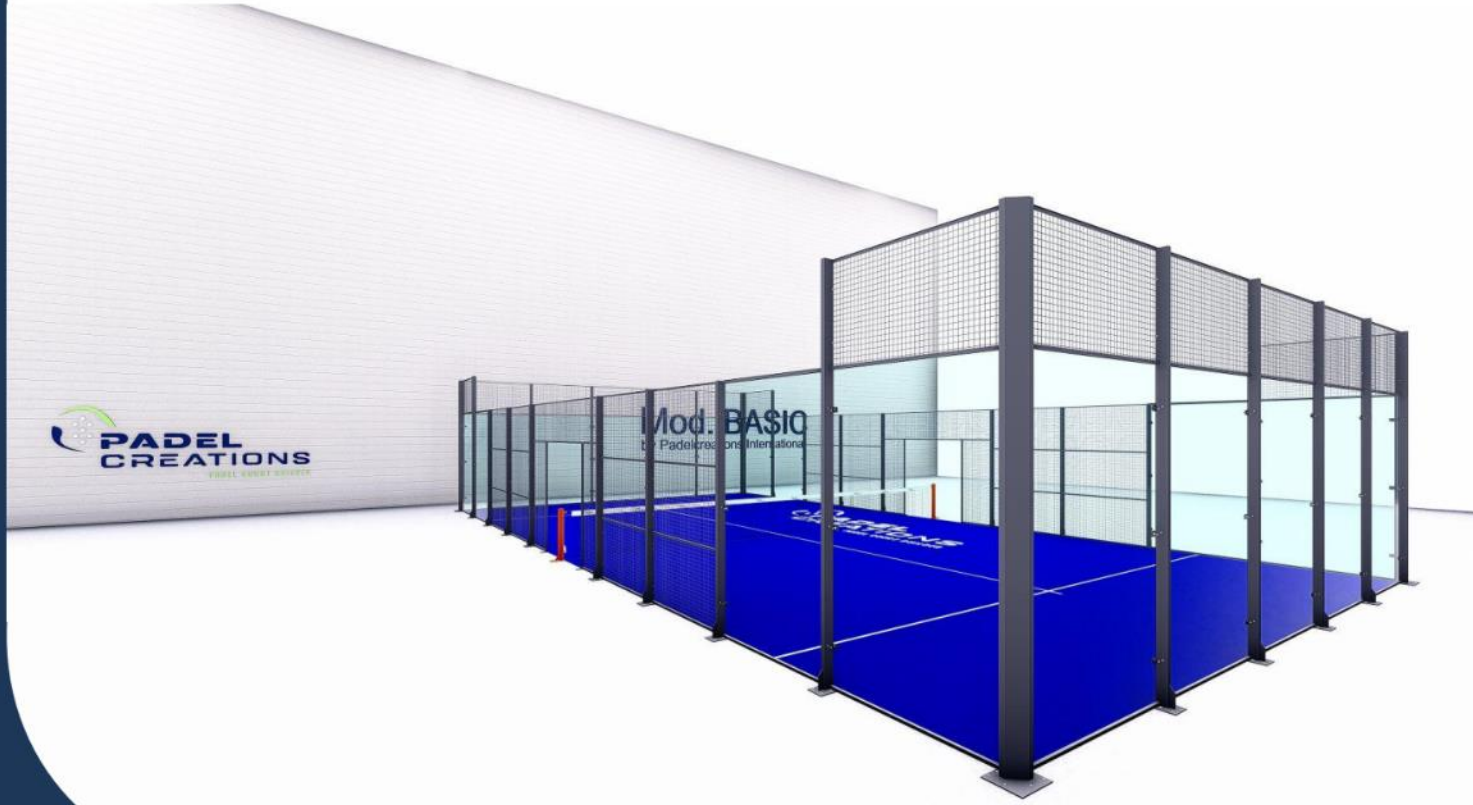


Indoor Court Specifications – Model Basic



DATA SHEET

Padel Court Mod. BASIC



Padel Court constructed with **simple pillars** is suitable for **indoor installations**. With safety transitions for players.

Install outdoors only in areas protected from wind.

For commercial and private use.

INDOOR / OUTDOOR

Mod. BASIC

TECHNICAL DETAILS		INDOOR USE OUTDOOR (ONLY IN HIGH WIND PROTECTED AREAS)
Construction system		Pillar construction (20 x 10 m)
Pillars Steel Structure	EN 10305-5	100 x 50 x 2 mm (3 mm Optional) / 30 x 30 x 2 mm
Vertical pillar reinforcement	EN 10305-5	none
Corrosion protection	EN ISO 2081:2018	Galvanised
Paints and varnishes	DIN 55633	Polyester Powder coating
Tempered Glass	EN-12150-1	10 mm (108 m2 - 3 x 2 m) / 12 mm (Optional)
Glass stability system		All 4 sides
Surfaces for sports areas	EN 12235	Artificial grass in 12 mm fibrillated, monofilament or textured
Lighting (Optional)	EN 12193:2008	Classes I-III: 500 Lux / 300 Lux / 200 Lux
Safety transitions for players		Included
Middle net	EN 1510	approved by FEP (Spanish Padel Federation)

Manufactured according to the standards of the International Padel Federation.

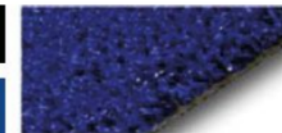
MOST POPULAR COLOR COMBINATIONS (STEEL + TURF)

RAL 6009



RAL 9011

RAL 9011



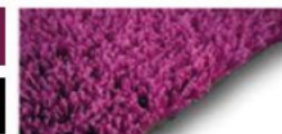
RAL 5022

RAL 3005



RAL 9011

RAL 4007



RAL 9011

FLOOR REQUIREMENTS



REINFORCED CONCRETE FLOOR
FREE OF WATER, GAS OR POWER
TUBES



All materials covering our value proposition have as origin Spain (EU-European Union), except the LED-Lighting System. For safety reasons we do NOT import any items like *glass* or *artificial grass* from countries outside the EU. Preferential origin from the European Union (EU) confers certain tariff benefits (entry at a reduced or zero rate of duty).

SIMPLE PILLAR CONSTRUCTION

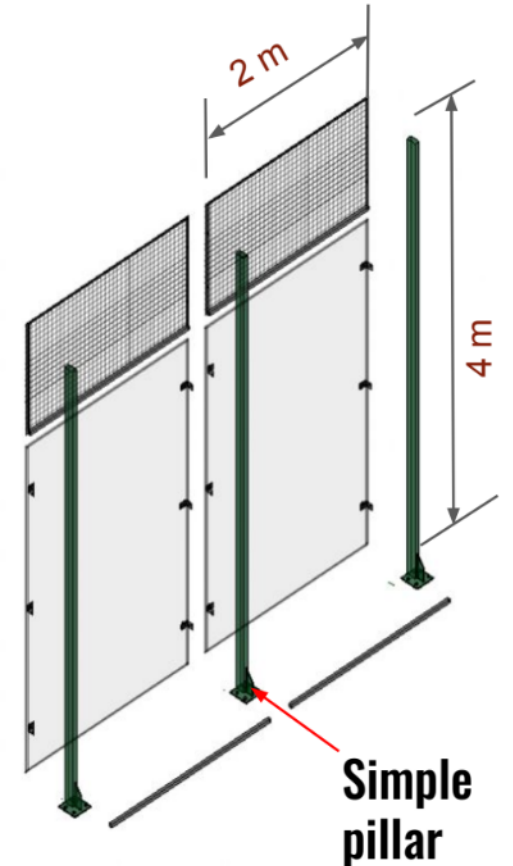
Mod. BASIC

PROS

- Recommended for Indoor
- OUTDOOR: Only in highly wind protected areas
- Structural upgrades available
- Very simple design
- Budget Court - Low price range
- Made out of multiple pieces to be screwed together
- Simplest construction available
- Low structural strength - less steel
- Easy to install

LOGISTIC FEATURES

- Shipment per 40ft-OT container (seafreight): max. 3 Padel Courts
- Shipment by truck: max. 3 Padel Courts per truck



Indoor Court Specifications – Panoramic Basic



DATA SHEET

Padel Court Mod. PANORAMIC BASIC



Padel Court constructed with **simple pillars** is suitable for **indoor installations**.

Spectacular design to enjoy Padel of the highest level like on WPT. Allow viewers to have an **optimal inside view**.

Install outdoors only in areas protected from wind.

For commercial and private use.



INDOOR / OUTDOOR

Mod. PANORAMIC BASIC

TECHNICAL DETAILS		INDOOR USE OUTDOOR (ONLY IN HIGH WIND PROTECTED AREAS)
Construction system		Pilar construction
Frame Steel Structure	EN 10305-5	100 x 50 x 2 mm / 30 x 30 x 2 mm
Glass modules	EN 10305-5	100 x 50 x 2 mm
Vertical pillar reinforcement	EN 10305-5	none
Corrosion protection	EN ISO 2081:2018	Galvanised
Paints and varnishes	DIN 55633	Polyester Powder coating
Tempered Glass	EN-12150-1	12 mm (108 m ² - 18 slabs - 3 x 2 m)
Glass stability system		2 sides
Surfaces for sports areas	EN 12235	Artificial grass in 12 mm
		fibrillated, monofilament or textured
Lighting (Optional)	EN 12193:2008	Classes I-III: 500 Lux / 300 Lux / 200 Lux
Middle net	EN 1510	approved by FEP (Spanish Padel Federation)
Manufactured according to the standards of the International Padel Federation.		

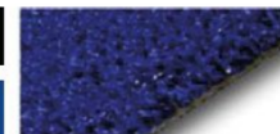
MOST POPULAR COLOR COMBINATIONS (STEEL + TURF)

RAL 6009



RAL 9011

RAL 9011



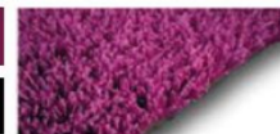
RAL 5022

RAL 3005



RAL 9011

RAL 4007



RAL 9011

FLOOR REQUIREMENTS



REINFORCED CONCRETE FLOOR
FREE OF WATER, GAS OR POWER
TUBES



All materials covering our value proposition have as origin Spain (EU-European Union), except the LED-Lighting System. For safety reasons we do NOT import any items like *glass or artificial grass* from countries outside the EU. Preferential origin from the European Union (EU) confers certain tariff benefits (entry at a reduced or zero rate of duty).

SIMPLE PILLAR CONSTRUCTION

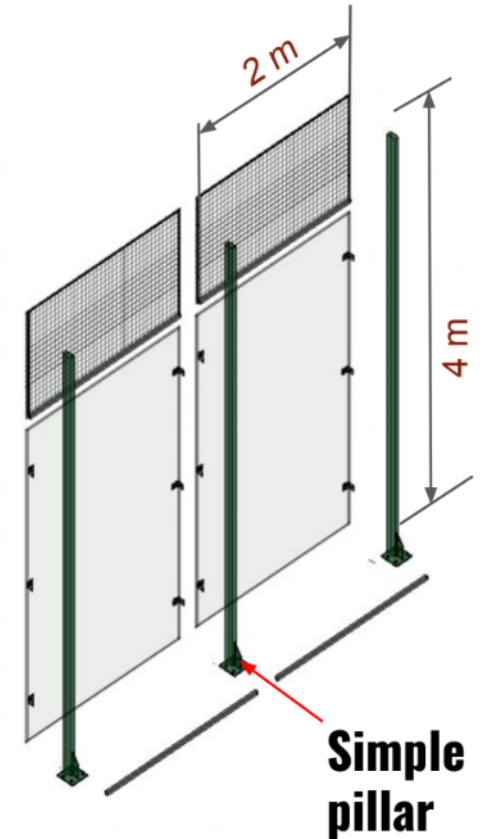
Mod. PANORAMIC BASIC

PROS:

- Recommended for Indoor
- Very simple design
- Budget Court - Low price range
- Made out of multiple pieces to be screwed together
- Simplest construction available
- **Outdoor:** Only in protected areas with very low windloads.
- Easy to install

LOGISTIC FEATURES:

- Shipment per 40ft-OT container (Seafreight): max. 3 Padel Courts
- Shipment by truck: max. 3 Padel Courts per truck



Outdoor Court Specifications – Premium SEP-B



DATA SHEET

Padel Court Mod. PREMIUM SEP-B



OUTDOOR



Robust Padel Court made of modular **reinforced frame construction** for an installation **OUTDOOR**, with safety transitions for players.

Padel Court is designed to withstand the basic wind speed in your location, which can reach up to **36 m/s (130 km/h)**, depending on the terrain category.

For commercial and private use.

STRENGTH CATEGORY

1 2 3 4 5



Calculated according to
EUROCODES

Mod. PREMIUM SEP-B



TECHNICAL DETAILS		OUTDOOR USE
Construction system	EUROCODE EN 1991-1-4	Reinforced frame construction (20 x 10 m)
Frame Steel Structure	EN 10219-2	80 x 40 x 3 mm
Vertical pillar reinforcement	EN 10219-2	80 x 80 x 3 mm
Structural Engineering Package	EUROCODE - EN 1991-1-4	SEP-B
Corrosion protection	EN ISO 2081:2018	Galvanised
Corrosion protection for areas with heavy corrosion load (Optional)	EN ISO 12944-2	Epoxy resin zinc powder primer, Corrosive category: C4 high (industrial and coastal areas with moderate salt load)
Paints and varnishes	DIN 55633	Polyester Powder coating
Tempered Glass	EN-12150-1	12 mm (108 m ² - 18 slabs - 3 x 2 m)
Glass stability system	Important!	All 4 sides
Surfaces for sports areas	EN 12235	Artificial grass in 12 mm fibrillated, monofilament or textured
Lighting (Optional)	EN 12193:2008	Classes I-III: 500 Lux / 300 Lux / 200 Lux
Safety transitions for players		Included
Middle net	EN 1510	approved by FEP (Spanish Padel Federation)

Manufactured according to the standards of the International Padel Federation.



All materials covering our value proposition have as origin Spain (EU-European Union), except the LED-Lighting System. For safety reasons we do NOT import any items like *glass or artificial grass* from countries outside the EU. Preferential origin from the European Union (EU) confers certain tariff benefits (entry at a reduced or zero rate of duty).

Due to continuous research and product improvement the specifications in this Product Information Sheet are subject to change without notice.

MOST POPULAR COLOR COMBINATIONS (STEEL + TURF)

RAL 6009	
RAL 9011	
RAL 9011	
RAL 5022	
RAL 3005	
RAL 9011	
RAL 4007	
RAL 9011	

FLOOR REQUIREMENTS

Foundation plans on request.

	REINFORCED CONCRETE STRIP FOUNDATION WITH DRAINAGE OR SIMPLE SLAB WITH SLOPE

REINFORCED FRAME CONSTRUCTION

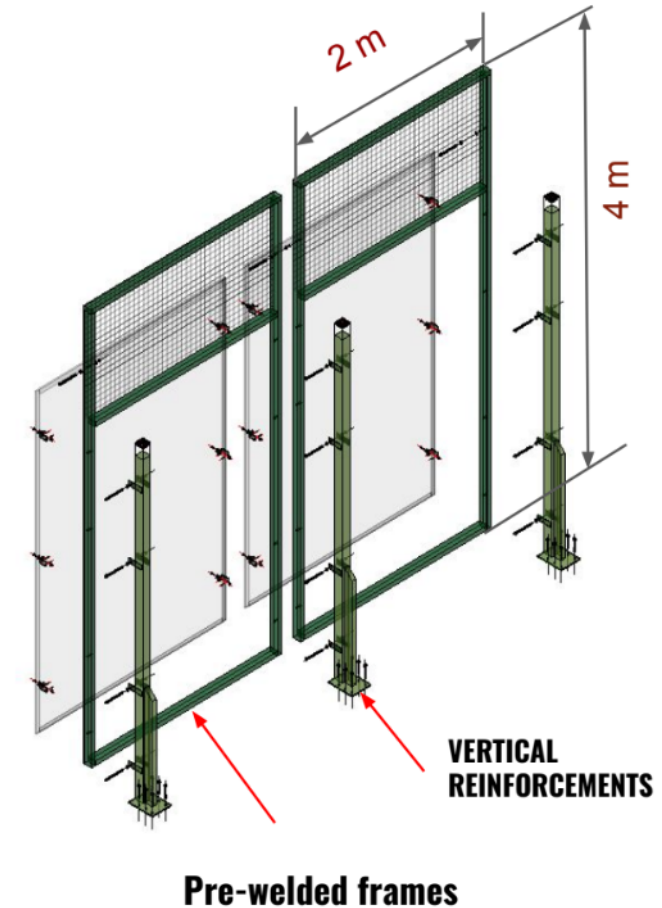
Mod. PREMIUM SEP A-E

PROS

- Designed for installation outdoor with high safety features.
- Structural engineering report available as per EUROCODE
- Available in 5 different strength categories.
- Pre-welded frames (80 x 40mm) for safe glass fixings.
- Reinforced pillars with 4 fixing points to the frame.
- Excellent structural strength for any outdoor use and terrain category (ex. beach-city)
- Excellent playing experience.
- Overall impression: solid and safe construction

LOGISTIC FEATURES

- Shipment per container (seafreight):
1 Padel Court per 40ft-OT-container
- Shipment by truck: 2 Padel Courts per truck



Outdoor Court Specifications – Panoramic



DATA SHEET

Padel Court Mod. PANORAMIC OUTDOOR



OUTDOOR



Padel Court constructed with **reinforced frame construction** is suitable for **OUTDOOR installations**.

Spectacular design to enjoy Padel of the highest level like on WPT. Allow viewers to have an **optimal inside view**.

Recommended for installation in wind-protected areas.

For commercial and private use.

Mod. PANORAMIC OUTDOOR

For an installation OUTDOOR with low wind loads and protected areas.



TECHNICAL DETAILS		USE OUTDOOR USE
Construction system		Reinforced frame construction (20 x 10 m)
Frame Steel Structure	EN 10305-5	80 x 40 x 2 mm
Vertical pillar reinforcement	EN 10305-5	80 x 80 x 2 mm
Glass modules	EN 10219-2	120 x 120 x 3 mm
Corrosion protection	EN ISO 2081:2018	Galvanised
Corrosion protection for areas with heavy corrosion load (Optional)	EN 12944-2	Epoxy resin zinc powder primer, Corrosive category: C4 high (industrial and coastal areas with moderate salt load)
Paints and varnishes	DIN 55633	Polyester Powder coating
Tempered Glass	EN-12150-1	12 mm (108 m ² - 18 slabs - 3 x 2 m)
Surfaces for sports areas	EN 12235	Artificial grass in 12 mm fibrillated, monofilament or textured
Lighting (Optional)	EN 12193:2008	Classes I-III: 500 Lux / 300 Lux / 200 Lux
Safety transitions for players		Included
Middle net	EN 1510	approved by FEP (Spanish Padel Federation)

Manufactured according to the standards of the International Padel Federation.



All materials covering our value proposition have as origin Spain (EU-European Union), except the LED-Lighting System. For safety reasons we do NOT import any items like *glass or artificial grass* from countries outside the EU. Preferential origin from the European Union (EU) confers certain tariff benefits (entry at a reduced or zero rate of duty).

Due to continuous research and product improvement the specifications in this Product Information Sheet are subject to change without notice.

MOST POPULAR COLOR COMBINATIONS (STEEL + TURF)

RAL 6009	
RAL 9011	
RAL 9011	
RAL 5022	
RAL 3005	
RAL 9011	
RAL 4007	
RAL 9011	

FLOOR REQUIREMENTS

Foundation plans on request.

	REINFORCED CONCRETE STRIP FOUNDATION WITH DRAINAGE OR SIMPLE SLAB WITH SLOPE

REINFORCED FRAME CONSTRUCTION + PANORAMIC

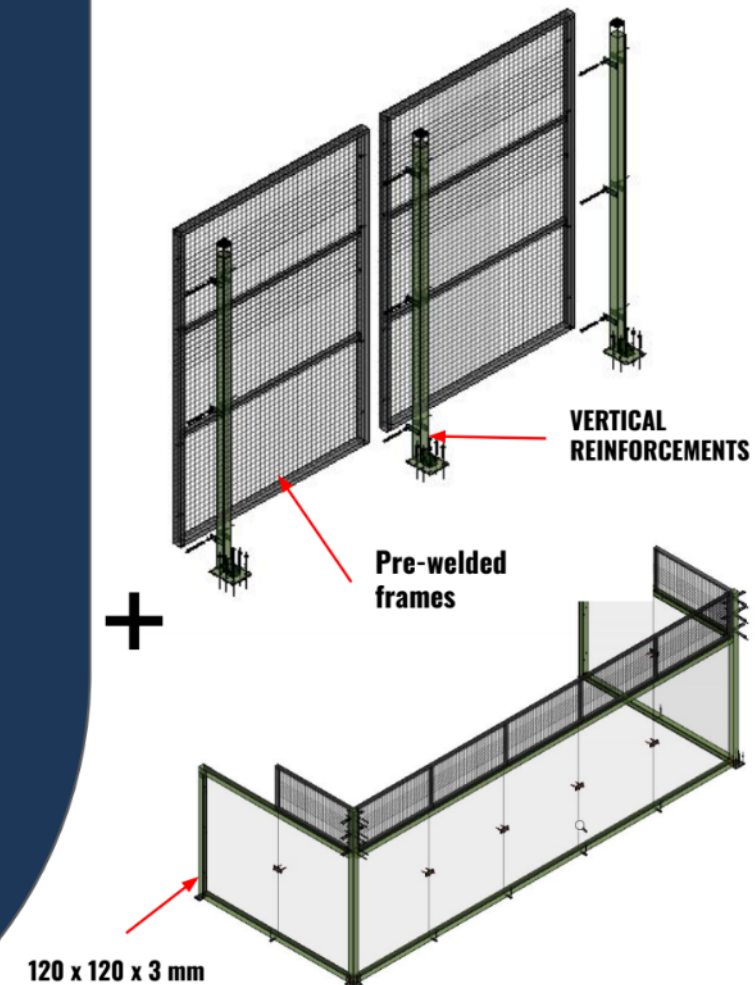
Mod. PANORAMIC OUTDOOR

PROS

- Elegant design for an installation OUTDOOR
- Strong tubes of 120 x 120 x 3 mm on glass area
- Pre-welded frames (80x40mm)
- Vertical reinforcement pillars 80 x 80 mm
- Excellent structural strength for outdoor installation, but in highly protected areas.
- Excellent playing experience.
- Easy to install.
- Overall impression: solid construction, less stable in the glass area in comparison with a reinforced frame construction.

LOGISTIC FEATURES

- 2 Padel Courts in container or truck



Lighting Specifications



Lighting Solution

The European Standard EN 12193 contains specifications for the lighting of sports facilities with the aim of providing good viewing conditions for padel players.

The requirements for the illumination of Padel Courts are divided into three lighting classes:

- Class I:** Top-level national and international competitions (non-televised) with requirements for spectators with potentially long viewing distances.
- Class II:** Mid-level competition, such as regional or local club tournaments. This generally involves medium-sized numbers of spectators with average viewing distances. High-level training may also be included in this class.
- Class III:** Low-level competition, such as local or small club tournaments. This does not usually involve spectators. General training, school sports and recreational activities also fall into this class.

The illuminance requirements (lux) are practically identical to the one of tennis. The lighting classes are not always in demand in terms of the level of competition, but in recreational sports, especially from the desire of higher experience and lighting comfort. The following shows the minimum standards according to the European Standard for Sports Lighting, EN 12193:2008:

Lighting class	Horizontal illuminance		
	Illuminance (lux)		Uniformity
	OUTDOOR	INDOOR (*)	
I	500	750	0,7
II	300	500	0,7
III	200	300	0,5

Lighting Solution

The spotlights sit at a height of 6 metres on 4 masts, at a distance of 4 metres from the corner along the length.

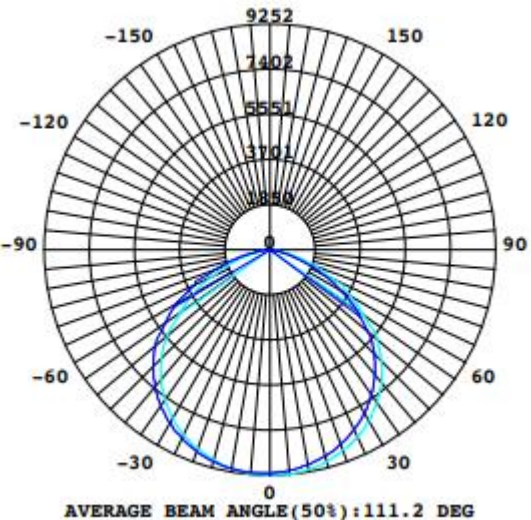
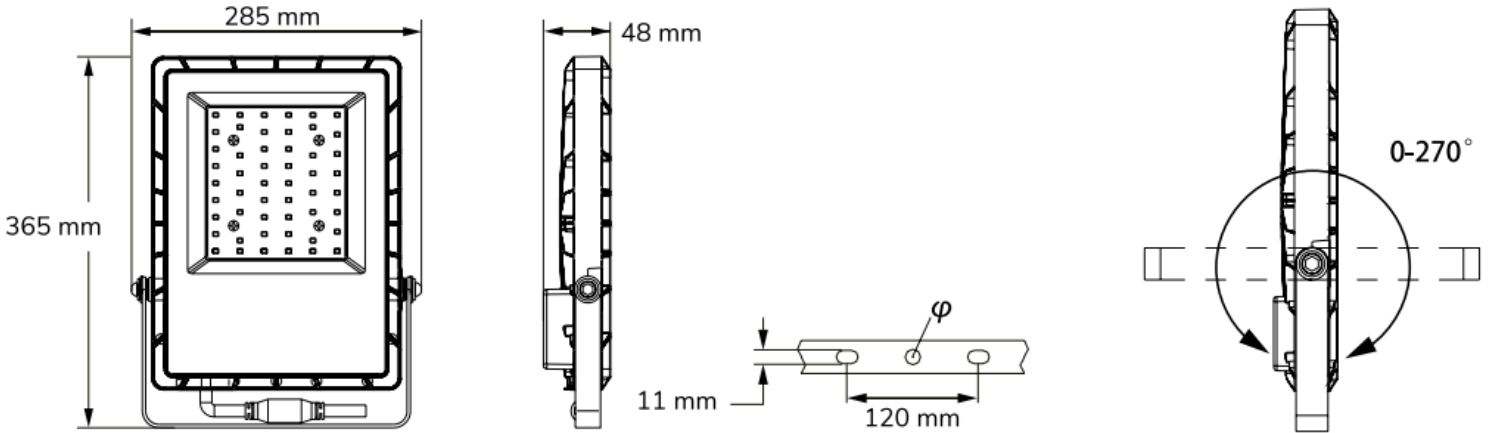
The most used solution is:

8 LED-Spotlights 200 W (2 units per lighting pillar)
for Lighting class II with 356 Lux on the field
Total Consumption: 1.6 kWh.

12 LED-Spotlights 200W (3 units per lighting pillar)
for Lighting class II with 554 Lux on the field
WPT-Version. Total Consumption: 2.4 kWh



Data Sheet – Filux FT-21200

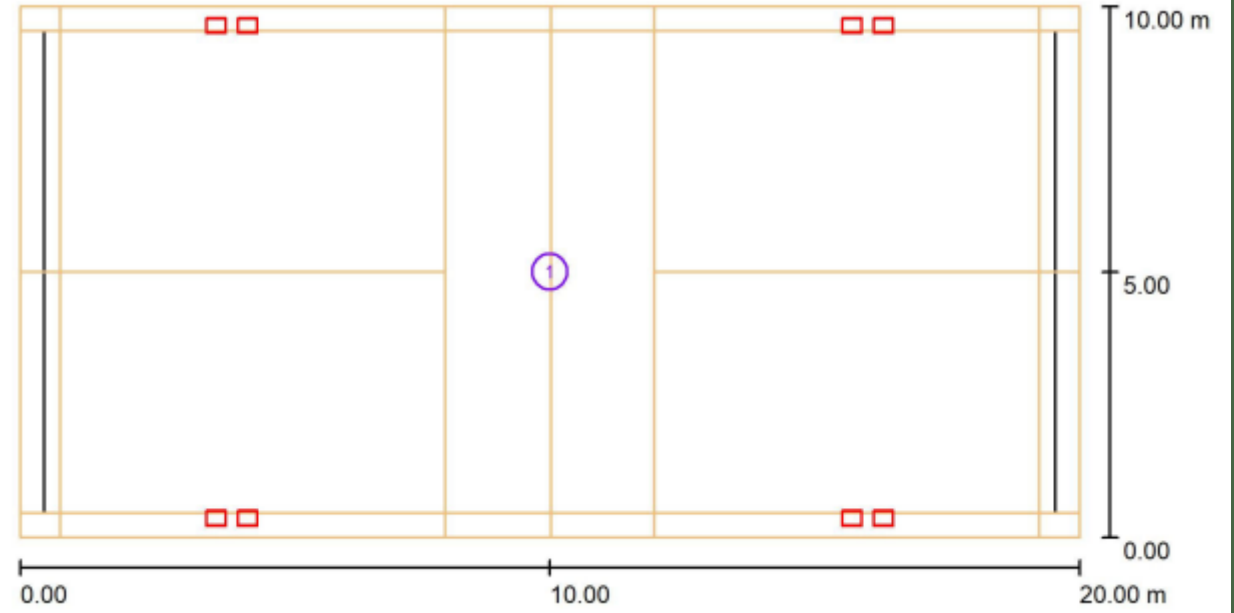
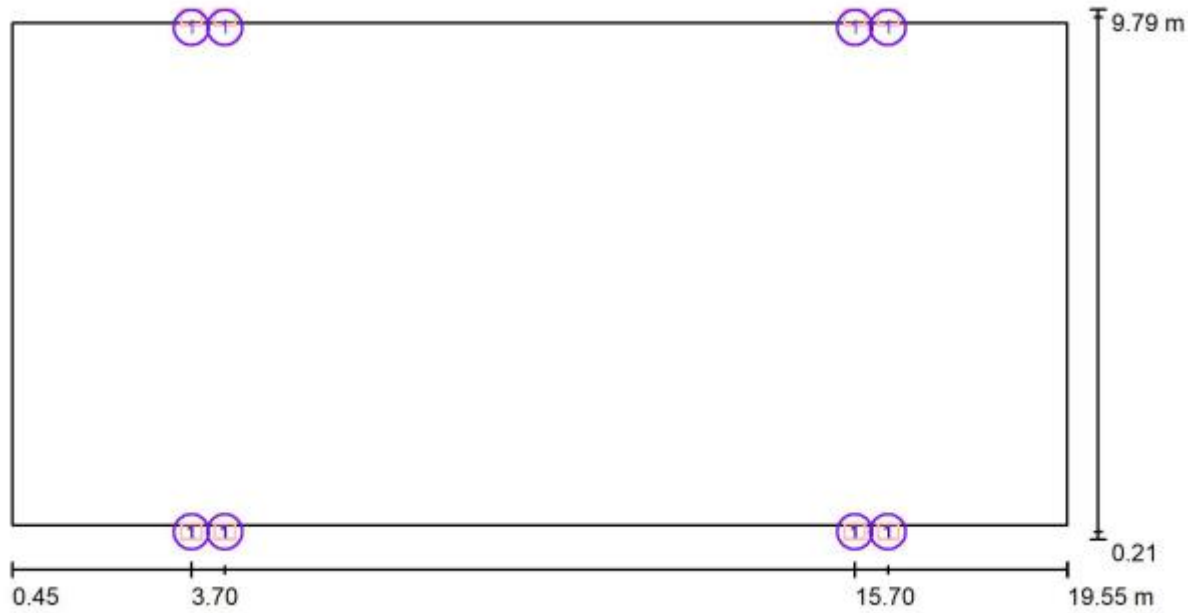


FILUX FT-21200 - F-2144 - 200W F-2144

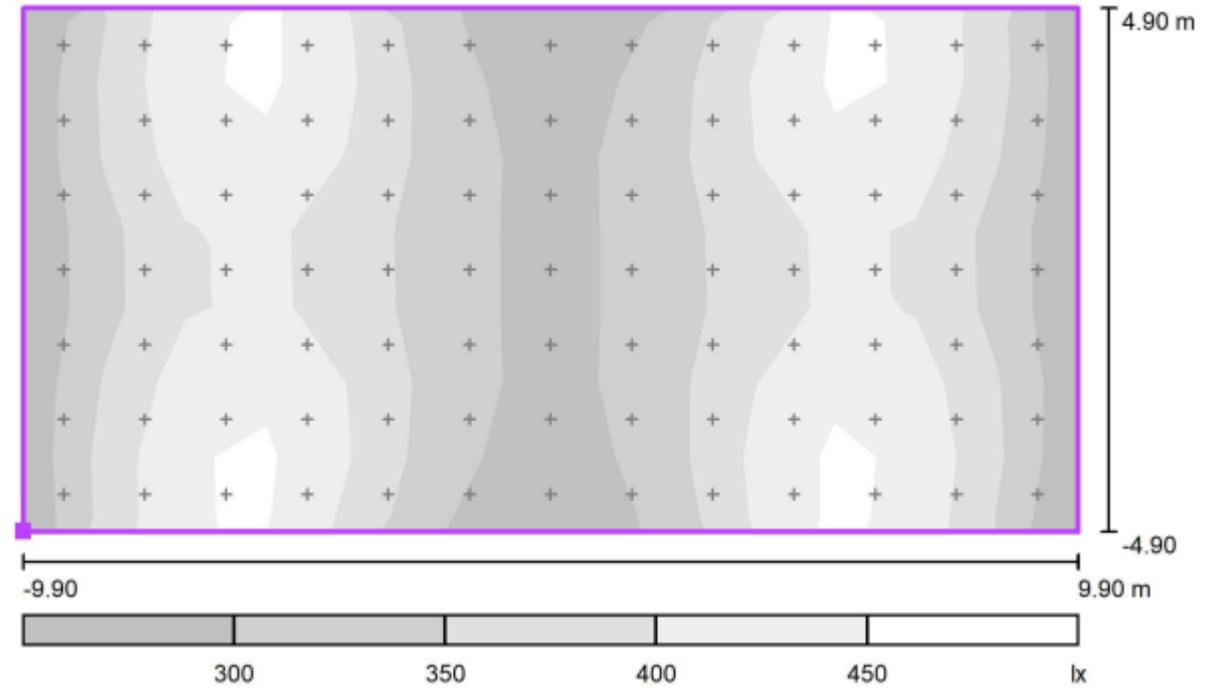
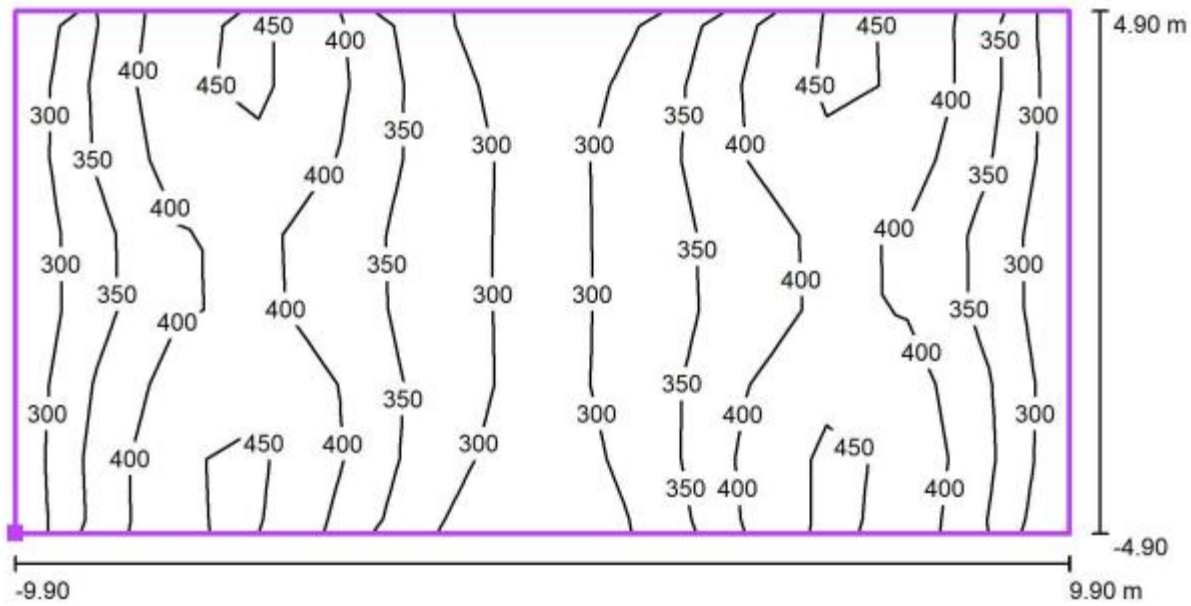
- Luminous flux (Luminaire): 25999 lm
Luminous flux (Lamps): 26000 lm
- Luminaire Wattage: 200.0 W
- Luminaire classification according to CIE:
g8 CIE flux code: 50 83 98 98 100
- Fitting: 1 x LED 200W (Correction Factor 1.000)

Model	SKU	Power	C.Temp	Lumens	Input
FT-21200	F2140	200W	3.000K	26.000	220-240V, 50-60HZ
	F2143		4.000K		
	F2144		5.700K		

Lighting Layout and Dimensions



Lumens Mapping



Canopy Information

Fordingbridge

Fordingbridge

Fordingbridge, are proud to be the national leaders in British-made padel court canopies and are the first choice for both padel court professionals and clubs alike. With over 55 years experience in the creation of structurally sound canopies and external enhancements, Fordingbridge are the clear choice for contractors, padel court suppliers, governing bodies, operators and tennis clubs alike to collaborate with, when tasked to install padel court canopies suitable for use throughout the year and in all weather. Their ability to manufacture in-house also allows us to ensure the highest quality in our engineering; ensuring safety, reliability and longevity in every structure they build.

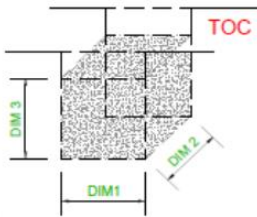
The benefits of their Padel Court canopies include:

- Renovating existing Padel Tennis spaces, or develop new spaces dedicated to Padel Tennis, structurally engineered and conforming to building regulations, backed by industry-leading guarantees of 25-years every structures frame.
- Year-round weather protection, protecting both your members and the facilities beneath from degradation, maximising court usage and revenues.
- Increased height considerations, including the height over the net, mitigating disruptions to play in line with the Padel Code of Practice adhering to the rules of gameplay.
- Exclusive tensioned roof material; Opal 60 membrane grants a generous 60% natural lighting under the cover, reducing running costs during daylight hours, with characteristics of exceptional durability and fire retardancy.
- Options of tailoring designs to suit the space allows for branding incorporation along with full functionality.
- Manufacturing all components inhouse allows Fordingbridge to provide a seamless process from initial enquiry to site visit and survey, through to inhouse fabrication and installation.

Indicative Foundation Specifications – Single Court Canopy

NOTES

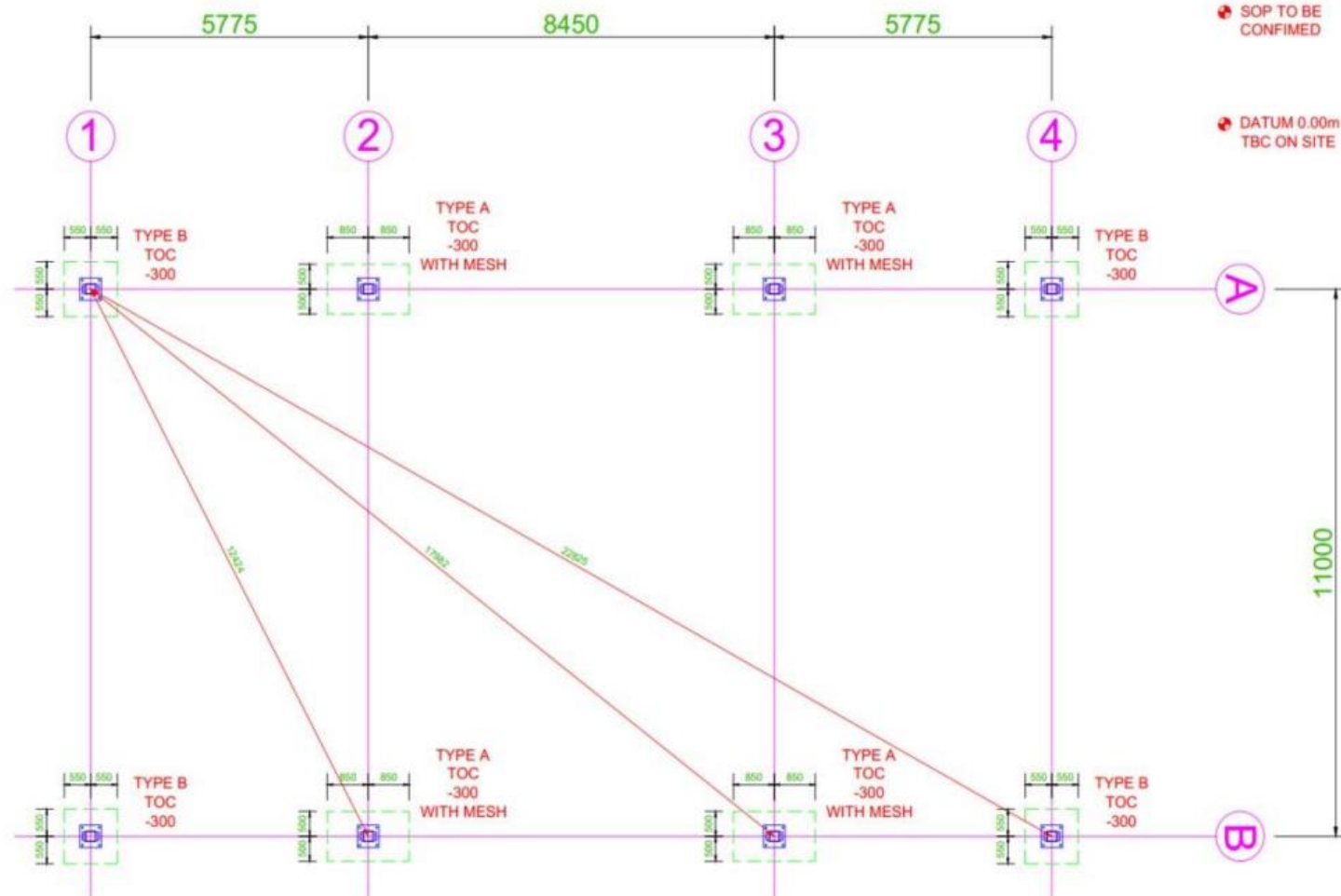
ALL LEVEL MEASUREMENTS ARE TAKEN FROM DATUM SET AT 0.00m.
 SOP = SETTING OUT POINT
 TOC = TOP OF CONCRETE PAD
 GL = EXISTING GROUND LEVEL



FOUNDATIONS:

DESIGNED BY FORDINGBRIDGE ENGINEER, INSTALLED BY OTHERS.
 SIZE: SEE TABLE BELOW
 SPECIFICATION: C35
 PADS TO BE AT DISTANCE SHOWN BELOW DATUM ALL LEVEL IN RELATION TO EACH OTHER AT EACH PAD POSITION +0/-10mm.
 TOP OF PADS TO BE TROWELLED SMOOTH
 GROUTING BY OTHERS

CONCRETE PAD SIZES			
PAD TYPE	DIM 1	DIM 2	DIM 3
TYPE A	1700mm	1000mm	850mm
TYPE B	1100mm	1100mm	850mm



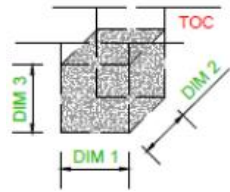
☛ SOP TO BE CONFIRMED

☛ DATUM 0.00m TBC ON SITE

Indicative Foundation Specifications – Multi-Span Court Canopy

CONCRETE PAD SIZES			
PAD TYPE	DIM 1	DIM 2	DIM 3
TYPE A	2200mm	1700mm	700mm
TYPE B	2300mm	2300mm	850mm
TYPE C	1800mm	1800mm	700mm
TYPE D	2200mm	2200mm	850mm

ALL LEVEL MEASUREMENTS ARE TAKEN FROM DATUM SET AT 0.00m.
 SOP = SETTING OUT POINT
 TOC = TOP OF CONCRETE PAD
 GL = EXISTING GROUND LEVEL



FOUNDATIONS:
 DESIGNED BY FORDINGBRIDGE ENGINEER, INSTALLED BY OTHERS.
 SIZE: SEE TABLE BELOW

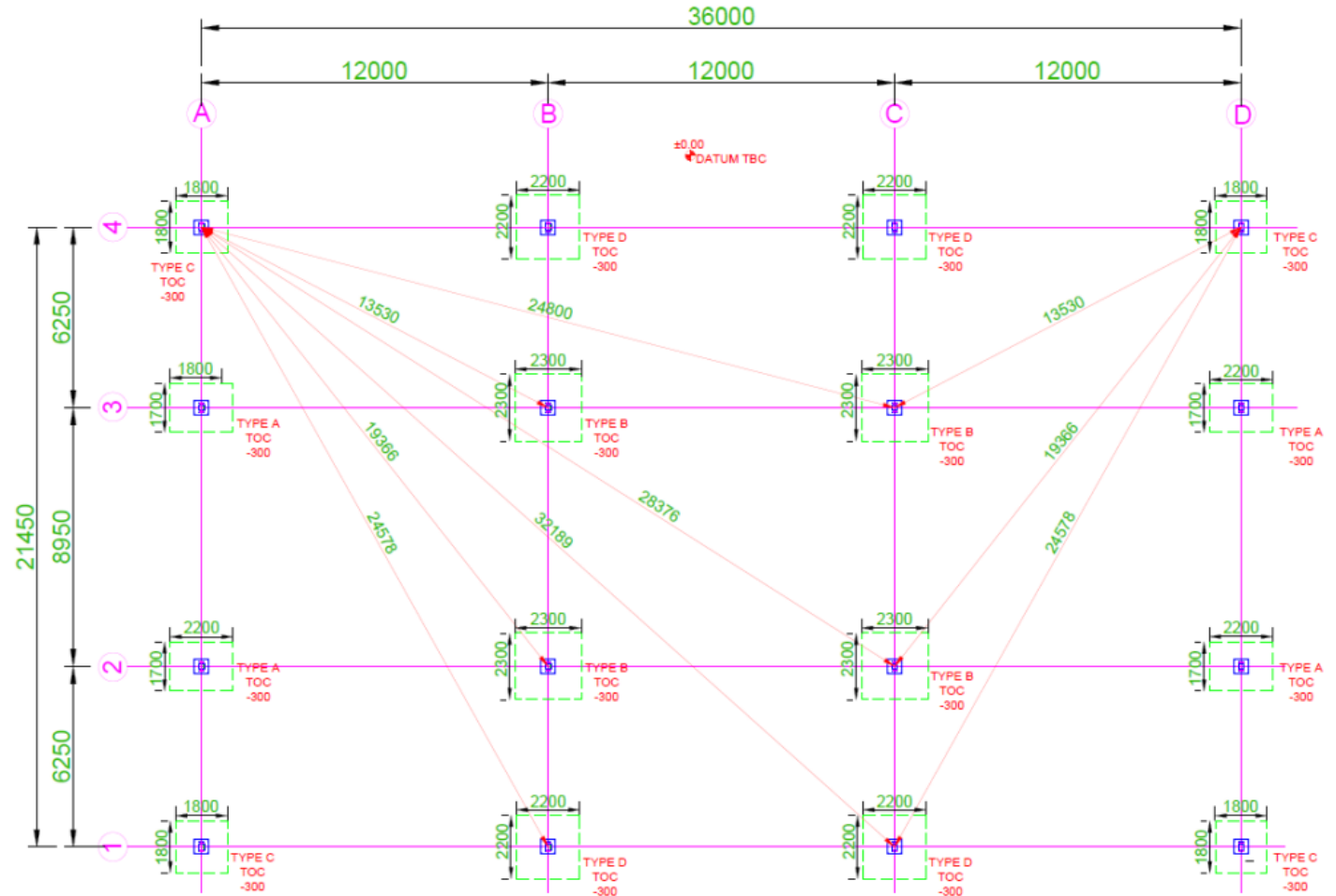
ALL C30/37, WITH DOUBLE LAYER A393 MESH TOP & BOTTOM.

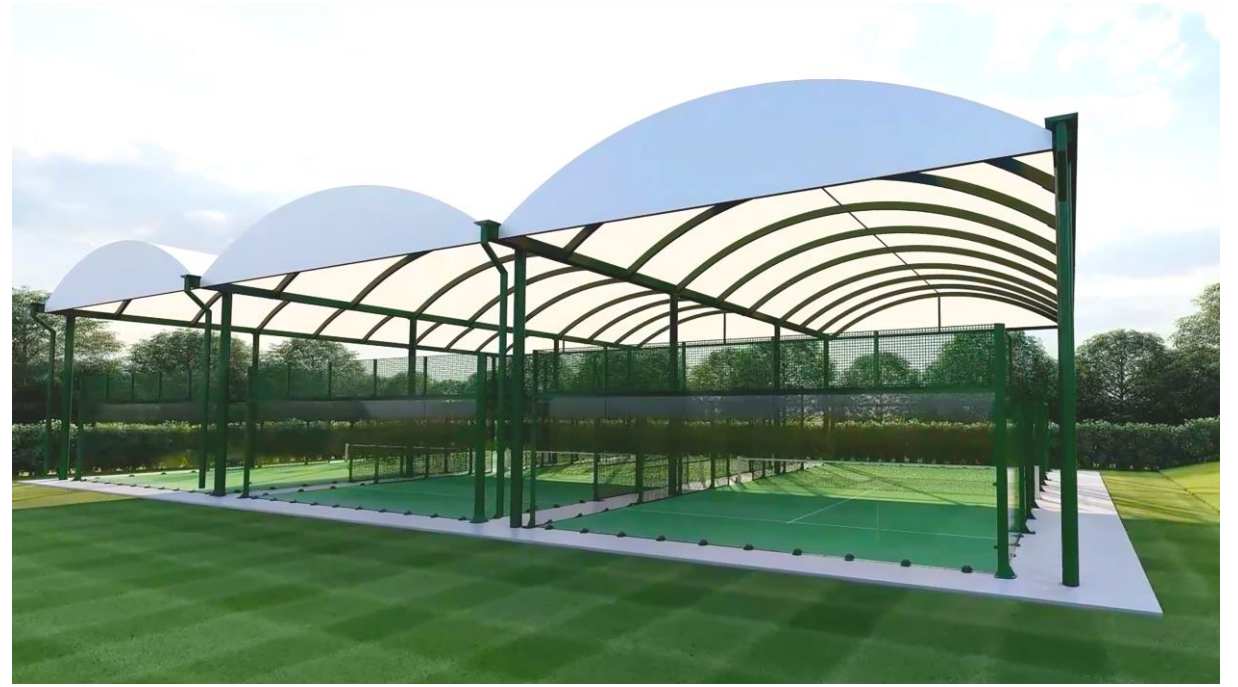
PADS TO BE AT DISTANCE SHOWN BELOW DATUM ALL LEVEL IN RELATION TO EACH OTHER AT EACH PAD POSITION +0/-10mm.

TOP OF PADS TO BE TROWELLED SMOOTH

GROUTING BY OTHERS:

BASE PLATES TO BE GROUTED WITH A NON-SHRINK CEMENTITIOUS GROUT E.G: CONBEXTRA GP BY FOSROC, OR SIMILAR APPROVED, AND USED IN ACCORDANCE WITH THE MANUFACTURER'S DATA SHEET. WITH MIN COMPRESSIVE STRESS OF 50 N/MM2 @7 DAYS

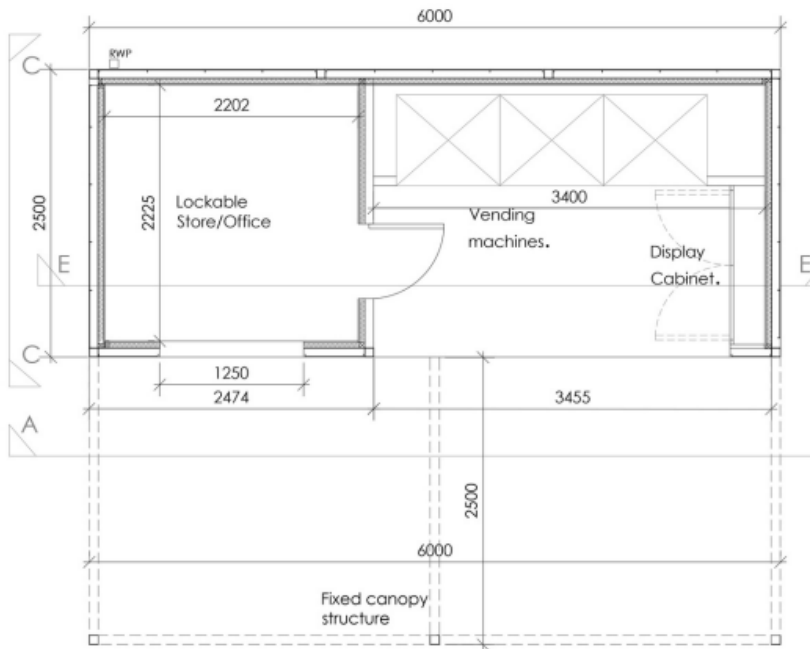






Clubhouse Information

Kio-Architecture

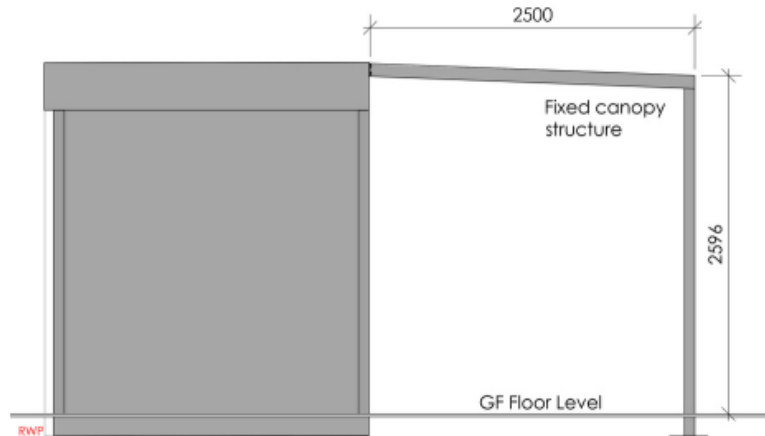
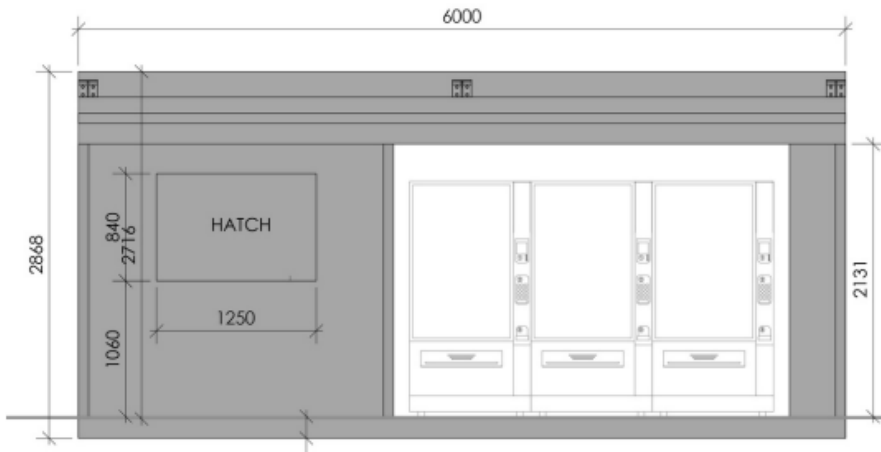


The MINI Kiosk Clubhouse

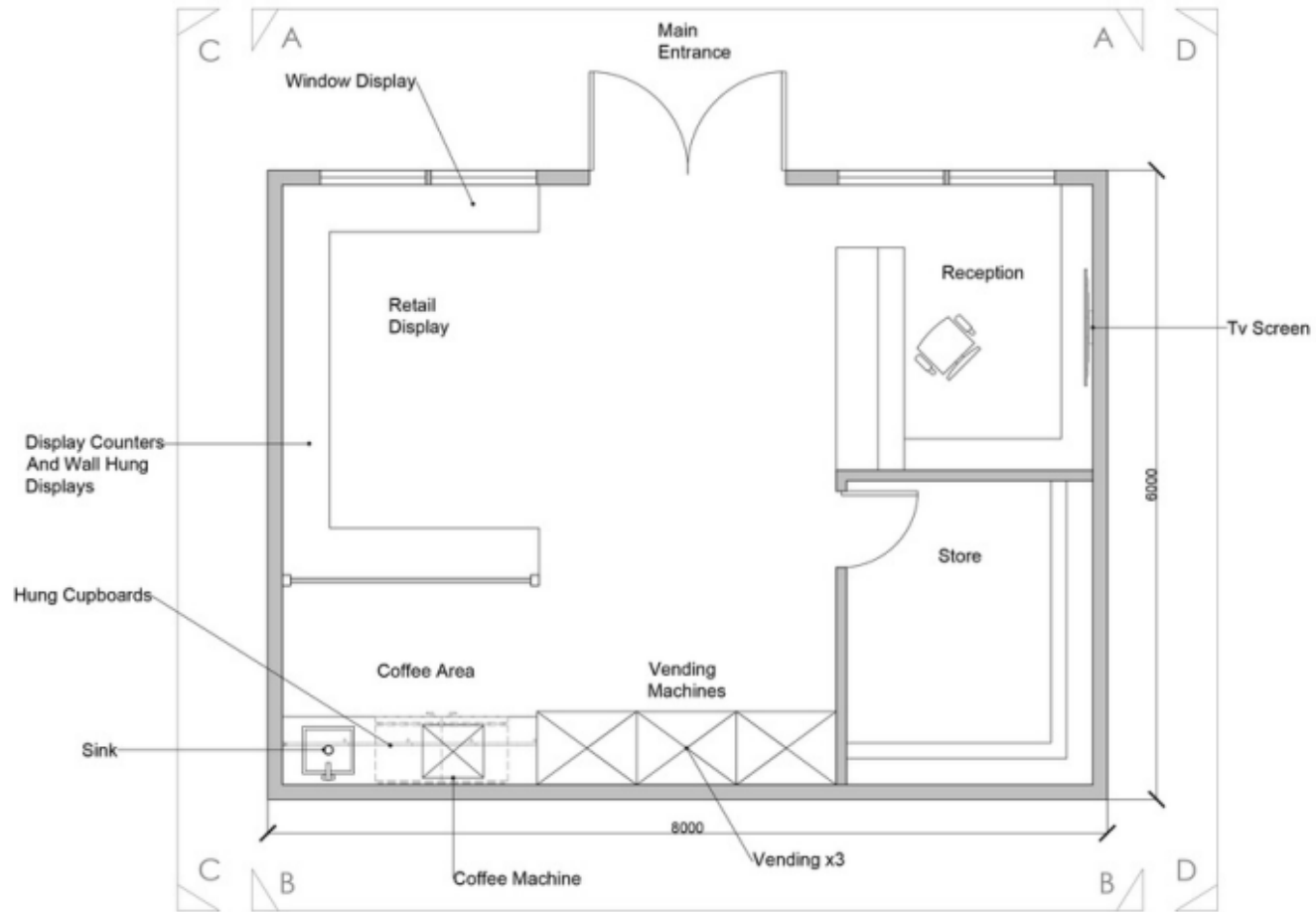
- Anti Vandal unit
- Lockable storeroom with servery hatch for events
- Countertop for servery
- Grey shelf for storage in store
- Flat sided steel finish
- Vinyl flooring with steel joint strips
- Interior lighting
- Polycarbonate Roof Canopy and fixings
- Consumer board and power sockets for vending machines
- Exterior IP rated plug

Extra items

- Planters with artificial box hedging
- Exterior furniture
- Illuminated signage and applied vinyl graphics to exterior
- Exterior lockers
- Internal Locker
- Electrically Operated Roller Shutter
- Interior retail display
- Delivery and Installation

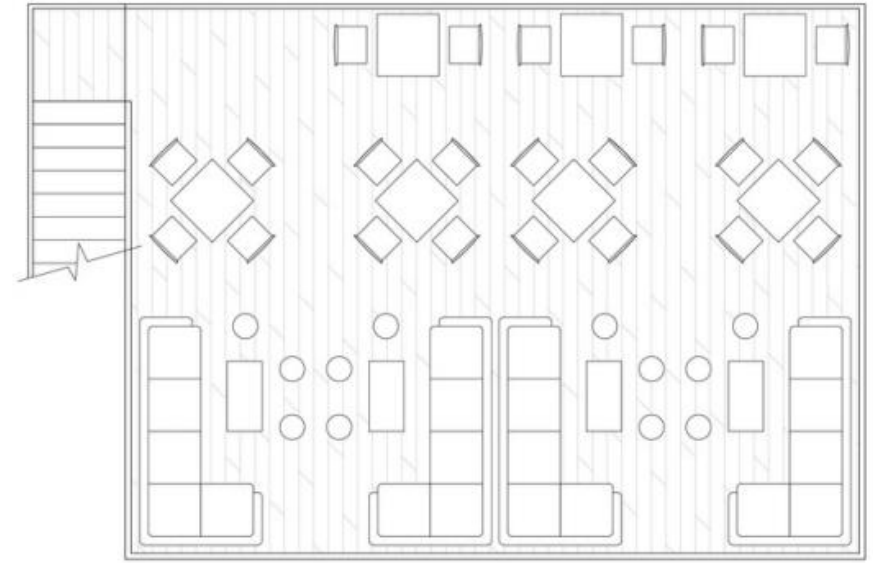
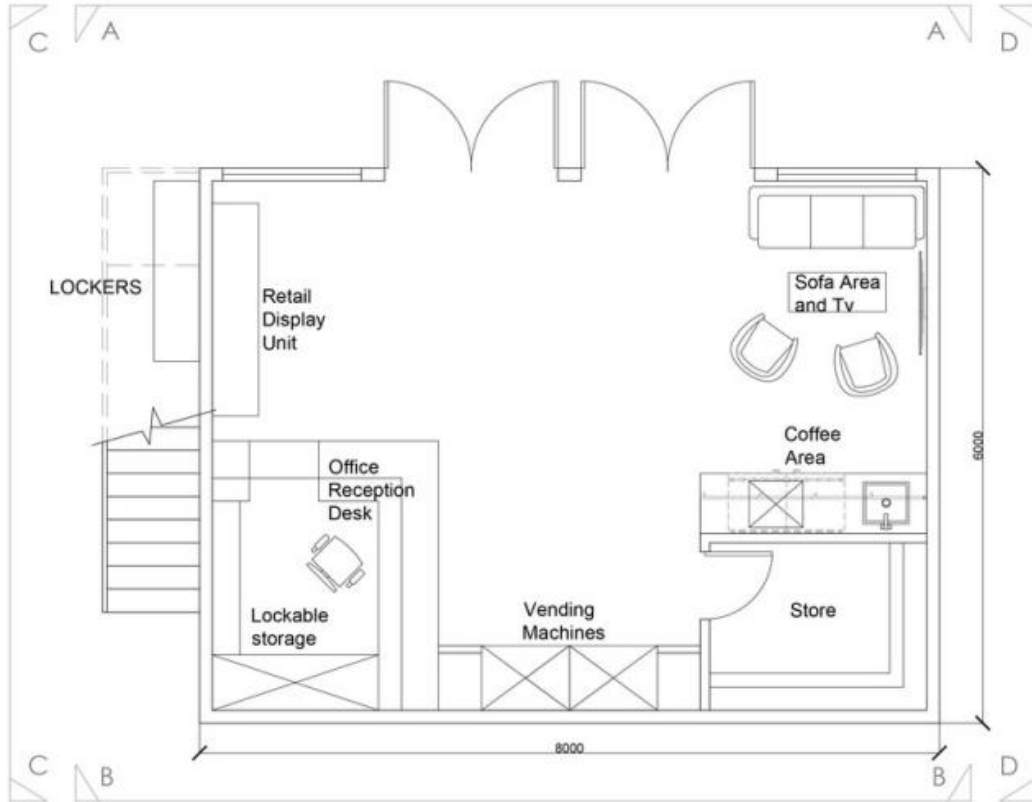


Prices from £32,225



OPTION A





OPTION B